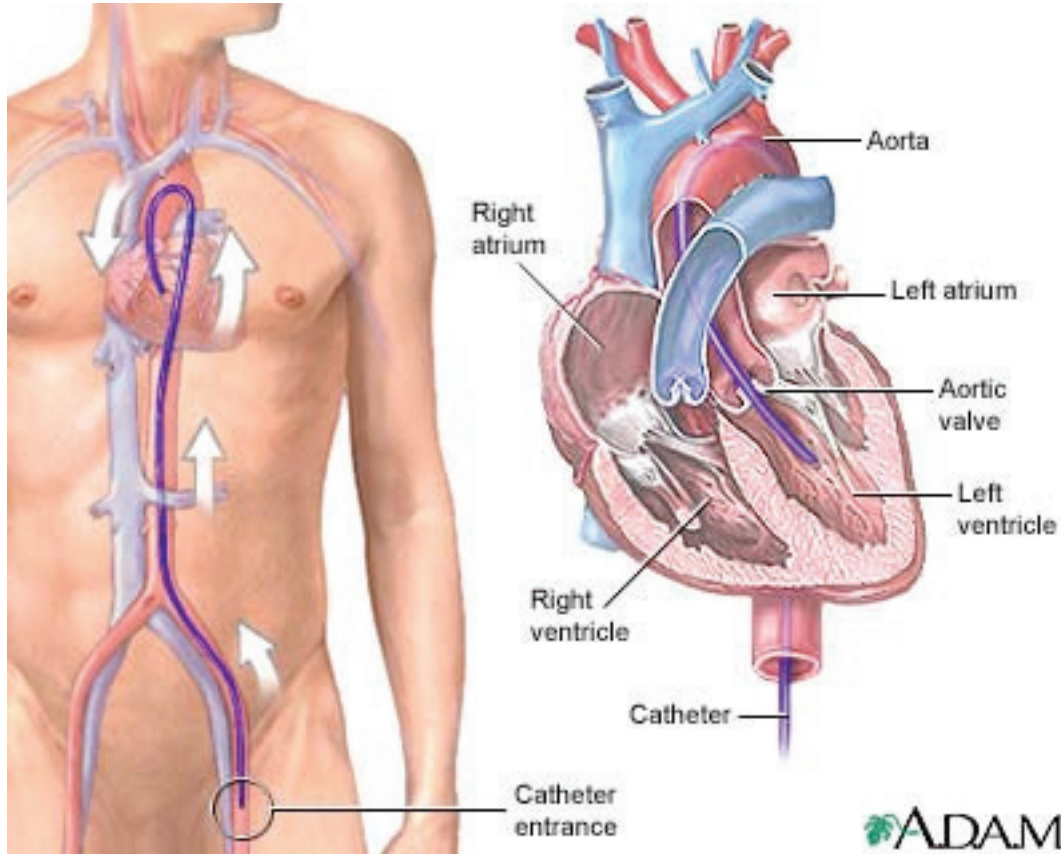


✓ *Cardiac Catheterization and Stent placement.*



Left heart catheterization involves the passage of a catheter (a thin flexible tube) into the left side of the heart to obtain diagnostic information about the left side of the heart or to provide therapeutic interventions in certain types of heart conditions. The test can determine pressure and blood flow in the heart's chambers, collect blood samples from the heart, and examine the arteries of the heart by X-ray (fluoroscopy).